

WithSecure™ Elements

Proactive and Modular – Made for Co-Security

W / T H[®]
secure



Elements of good cyber security.

Elevate your security posture

No one – and nothing – can solve every cyber security problem alone. Good cyber security is a team sport where people, organizations and technologies work together as one.

WithSecure™ Elements Cloud gives you that by combining core security capabilities into one cloud-native platform – delivered with expert services, trusted partners and flexible subscription options.

Simplify your security, elevate your security posture and get complete coverage for your security value chain across endpoints, business-critical cloud applications and more. No silos or overlaps.



Customize, scale, and adapt.

You can customize your security palette with pick and choose modules.

More elements means more results and a stronger security posture, but you can optimize your set-up for your situation and introduce new security capabilities gradually.

No-strings-attached subscription plans make it easy for you to adapt as you go.

Try for free



Find and see everything in one place. In real time.

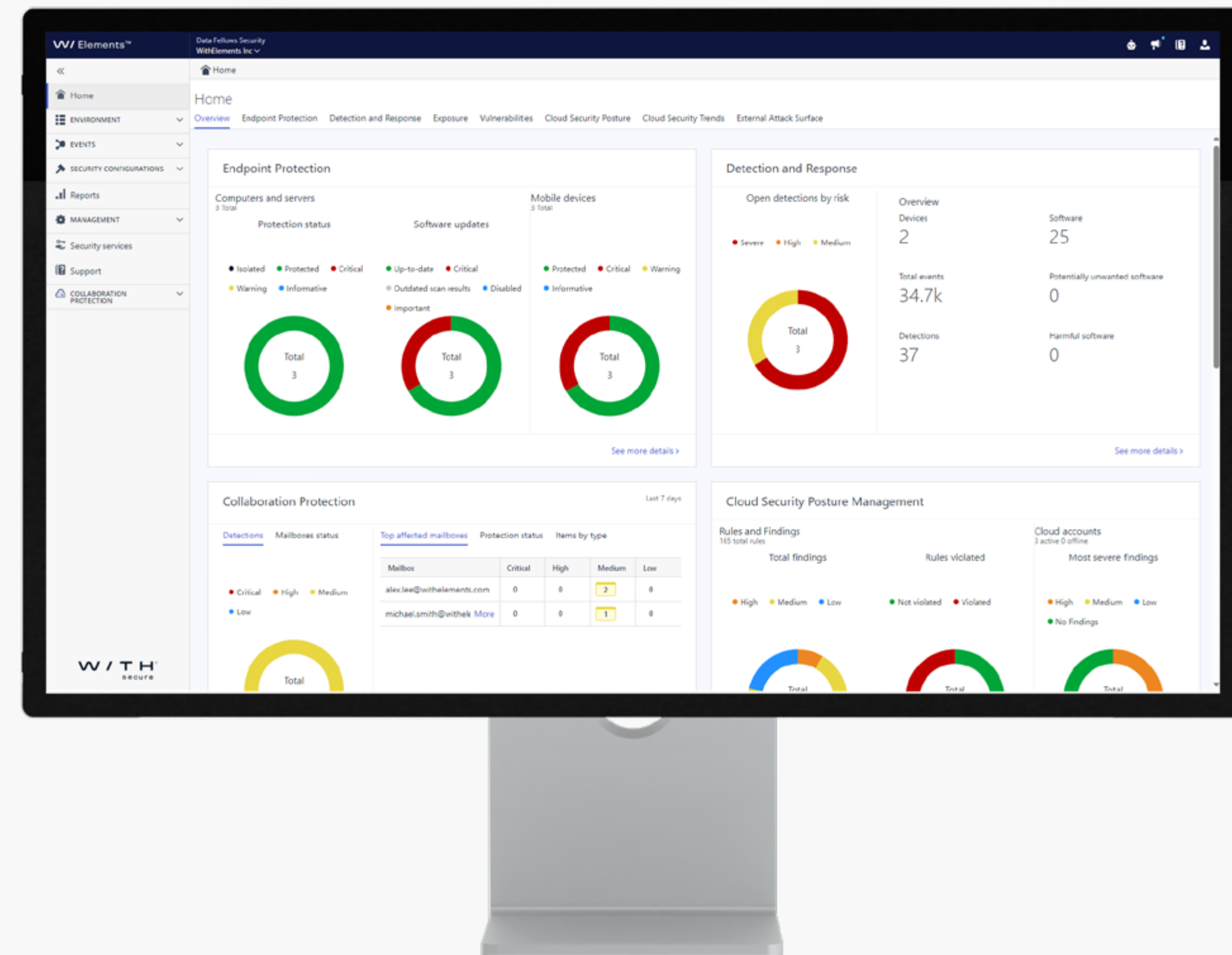
Cyber security can't live in a silo. Silos of fragmented toolsets leave loopholes that are easy to exploit with increasingly automated attack methods. Complex cyber security toolsets harm productivity. Inefficiency leaves room for human errors, slows down response times, and halts core activities, putting your business continuity at risk.

Situational awareness

Elements Cloud unifies security capabilities to work together as one. The fusion of proactive and reactive security capabilities gives you a confident real-time picture of your security posture, including your full attack surface, where your risks are, and what is actually happening. The dynamic platform collects, correlates and intelligently processes huge amounts of data to produce actionable information. You understand the severity of your risks, so you can prioritize remediation accordingly. No guesswork.

Enterprise-wide visibility

You get enterprise-wide visibility across endpoints, cloud applications and shadow IT. You can see the big picture of your security posture as it evolves in real-time, zoom in on details, and understand critical dependencies with confidence. WithSecure's cyber security partners are empowered with multi-company visibility and management.



WI Elements™

Real-time threat intelligence

WithSecure™ Security Cloud is the cornerstone of our security capabilities. The cloud-based threat analysis and detection service gathers real-time threat intelligence from tens of millions of security sensors across the globe, analyzes it in the cloud and applies it almost instantly. Security Cloud's threat intelligence evolves constantly, and our top analysts fine-tune detection logic relentlessly to keep you on top of the threat landscape.

WithSecure™ Elements Endpoint Security

is part of the wider WithSecure™ Elements XDR family, and provides continuous protection for your endpoint devices – whether they are Windows, Mac, Linux or Mobile. It combines our Elements Endpoint Protection and Elements Endpoint Detection and Response solutions into a single package for advanced protection, detection and response capabilities.

WithSecure™ Elements Identity Security

is an identity threat detection solution that is part of the wider WithSecure™ Elements XDR family. It protects organizations against identity-based attacks by detecting potentially compromised Microsoft Entra ID identities that are used by attackers to access Microsoft 365 or other cloud-based services.

WithSecure™ Elements Collaboration Protection

as part of the WithSecure™ Elements XDR family fortifies the built-in security measures of Microsoft 365. Its powerful security layer wards off malicious content and phishing attacks, and detects account compromises and inbox rule manipulations, covering email, SharePoint, OneDrive, and Teams.

WithSecure™ Elements Exposure Management

is a continuous and proactive solution that predicts and prevents breaches against your company's assets and business operations. It provides visibility into your attack surface and enables the efficient remediation of its highest-impact exposures through a unified view, thanks to our exposure scoring and AI-enabled recommendations.

WithSecure™ Co-Security Services

enhance your security operations team with flexible access to combat-ready defenders. Elevate security issues to our experts on-demand, let us Co-Monitor your environment, or use our 24/7 Managed Detection and Response (MDR) service. Moreover, our Incident Response services provide access to certified incident response experts.

Prepare for tomorrow, strengthen your digital security today.

The most cost-effective way to reduce cyber risk is to combine predictive and preventive cyber security capabilities.

Know your attack surface and risks

With integrated end-to-end exposure management, you get a confident real-time picture of your security posture, including your full attack surface and where your business risks are. You get actionable information to understand the severity of your risks and can prioritize remediation using AI-powered recommendations. Get one solution for 360° digital exposure management and visibility across your external attack surface and internal security posture, to proactively prevent cyber-attacks.

Fend off ransomware and malware

Protect your devices against known and zeroday malware and ransomware. Multi-engine anti-malware leverages AI, real-time threat intelligence, and reputational and behavioral analytics to ward off even the most sophisticated threats autonomously.

Protect a plethora of devices and applications

Effective exposure management and collaboration protection ensure no weak spots can be exploited to get in, and endpoint security with automated patch management keeps your guard up proactively and enables prompt responses to detections.

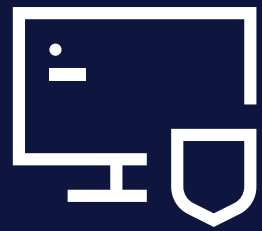
You can safeguard your computers, mobile devices and servers with a single platform. WithSecure™ Elements covers all your Windows, Mac, Linux, iOS, and Android devices. Moreover, it secures your identities, networks and cloud services like AWS and Azure.

Cloud collaboration applications critical for hybrid work are proactively protected against malicious content. Identity-based attacks using compromised user credentials from Microsoft Entra ID are swiftly detected.

Secure your hybrid workforce

Today's cyber security needs to collect, correlate, analyze and make use of information from geographically dispersed users and assets.

WithSecure™ Elements protects your devices beyond your company network. Cloud-based technologies are packed into a single agent, allowing you to perform scans for exposures, apply software patches, and respond to attacks remotely.



Computers

Windows, Mac, Linux



Mobiles

iOS, Android



Servers

Windows, Linux, Citrix



Email

Microsoft Outlook



Cloud Collaboration Apps

Microsoft Teams,
SharePoint, OneDrive



Networks

Network equipment



Cloud Infrastructure

Azure, AWS



Identities

Entra ID



External Attack Surface

Internet discovery

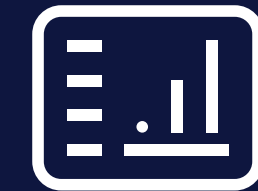
WI Elements™

Unified data is analyzed
with global threat
intelligence



Luminen™ GenAI

Your Elements Cloud
platform AI Assistant



One Security Center

Where you find clarity and
can manage your security
efficiently

Stop advanced attacks with intelligent detection and response.

Layering security capabilities is key to minimizing risk, avoiding disruptions and maintaining security posture.

Understand what actually happened and act based on the data

The sooner you catch the attack the better – but that’s easier said than done. Real attacks are easy to miss amidst alert noise – even with the heaviest security management solutions.

WithSecure™ Elements Endpoint Detection and Response (EDR), as part of WithSecure™ Elements Endpoint Security, looks for the needle in the haystack so you don’t have to. It gives you a contextual big picture understanding of what is going on in your environment, and pinpoints any anomalous behavior. You can investigate detections using Luminen™ GenAI. The most challenging security issues can be escalated to our experts on-demand via WithSecure™ Elevate.

You can cut down analysis time with high fidelity detections, delivered with the most advanced machine learning algorithms. No alert noise to distract you. Clear, simplified visualizations help you quickly connect the dots. You understand how different events are linked together on a timeline.

Integrated vulnerability data and behavioral analysis arms you with true situational awareness of the risks you face.

Take back control with swift response

You can cut attack dwell time – and minimize damages – with fast containment.

You can investigate, contain and remediate threats as the situation at hand requires with a comprehensive set of response actions. If you are already compromised, you can stop the attacker from establishing a stronger foothold and restore affected devices with remedial response actions.

Automated response ensures your critical assets are safe 24/7. Optionally, you can offload security management to WithSecure™ via our MDR service or to our trusted partners whenever you wish. We also offer a co-monitoring service, providing Elements EDR users with 24/7 validation, investigation, and remediation guidance from our own team of dedicated, highly-experienced responders.

277 days

Average time
to detect and contain
a breach in 2023.¹

WithSecure™ Elevate

Sometimes the situation can be too tricky to handle on your own. When that happens, you are never alone. You get elite threat hunter investigation and response guidance – normally reserved for the most demanding enterprises – as a 24/7 pay-as-you-go service.



**Unified data across
technology modules**

**Actionable information
powered by AI and real
life attack data**

**20+ response
options**

Simplify your cyber security management.

In a world where complexity is the new normal, cyber security should be simple.

Boost operational efficiency

WithSecure™ Elements unifies core security capabilities into one cloud-native platform. Instead of fragmented domains you get a single agent and a single security center, with all your data in a single system. You can say goodbye to data silos and manage your full security value chain efficiently without overlaps.

Management from the cloud means you don't need any additional hardware or software. Your solutions are always up-to-date automatically, and you can manage them from anywhere, anytime. All you need is a browser.

The solution is extremely non-disruptive, allowing your hybrid workforce to operate at full speed.

Onboard intelligent automation

Free the minds of your key people. Highly automated technologies take care of most of the workload for you proactively. Efficient workflows, built-in guidance, and risk-based prioritization help you focus on the most important tasks at hand.

Customize as you like

Our modular structure allows you to build the suite that fits you best, while modifying it on the go. Deployment is quick from the cloud. Highly customizable settings allow you to manage solutions according to your security policies.

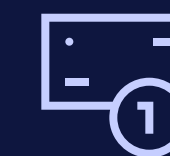
Our pioneering flexible subscription options let you ramp up or down on the go without hassle. You pay for what you really use and need. Nothing more.

Integrate effortlessly

You can connect WithSecure™ Elements security data with your preferred third-party security tools such as security management (SIEM), storage, monitoring, or reporting systems.



Pick-and-choose modules



Pay-as-you-go subscriptions



Low maintenance in the cloud

Conquer talent shortage with Co-Security.

Our partners are never alone

Cyber security is a team effort. When working together as a team, everyone brings what they've got to the table. We know that cyber security skill is rare these days. It's hard to find, hard to obtain, and hard to retain. We provide the innovations that simplify your life and lighten the load with automation and cloud-based effortlessness.

Offload security management tasks and amplify your focus

The power of good cyber security is increased exponentially through our partner ecosystem, where the value of knowledge only increases when it's shared. You can offload most of your security management tasks to our trusted partners, stretching your team to cover any skills gaps and missing pairs of hands.

At the same time, we support our partners on their cyber security journey, enhancing their skills and competencies, and share the latest insights with them – so they can apply and transfer that knowledge to you.

When we say we've got your back, we mean it. Our elite threat hunting and incident response teams will be there when you need them the most.



"Once the implementation was complete, we immediately saw the benefits... It's now very easy for us to get real-time reports of performance and threat data from any of our locations."

– Mark Hawkins, Global Humanitarian Technologies Manager, Save the Children

"This level of visibility is a huge advantage, especially when a large proportion of the workforce is connecting via private networks in home offices."

– Anders Løvhøiden, Regional Security Officer, Azets

"We chose WithSecure™'s solutions over a SIEM solution because its Machine Learning based application behavior detection system drastically reduced the amount of false alarms and presented the alerts in a way that made analysis and decision

– Jeovane Monteiro Guimarães, IT Supervisor, Móveis Itatiaia

"WithSecure™ Elements Endpoint Detection and Response has been designed to be as convenient and easy to use as possible."

– Harri Ahokas, IT and Security Manager, Teosto

Proven to protect.

No one should experience a serious loss because of a cyber attack

We keep on stepping up our game to make sure your protection doesn't just keep up with but stays ahead of emerging threats.

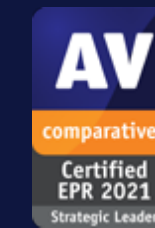
Good partnership equals transparency

We participate in independent evaluations to openly demonstrate our solutions' performance under the most pressing circumstances – and achieve consistent results year after year.

Get your free 30 day trial

MITRE | ATT&CK®

Industry-leading advanced detection capabilities



Chosen as a 'Strategic Leader' with superior cost-efficiency



The most consistent performance in AV-TEST 'Best Protection' awards

Who We Are

WithSecure™, formerly F-Secure Business, is cyber security's reliable partner. IT service providers, MSSPs and businesses – along with the largest financial institutions, manufacturers, and thousands of the world's most advanced communications and technology providers – trust us for outcome-based cyber security that protects and enables their operations. Our AI-driven protection secures endpoints and cloud collaboration, and our intelligent detection and response are powered by experts who identify business risks by proactively hunting for threats and confronting live attacks. Our consultants partner with enterprises and tech challengers to build resilience through evidence-based security advice. With more than 30 years of experience in building technology that meets business objectives, we've built our portfolio to grow with our partners through flexible commercial models.

WithSecure™ Corporation was founded in 1988, and is listed on NASDAQ OMX Helsinki Ltd.

